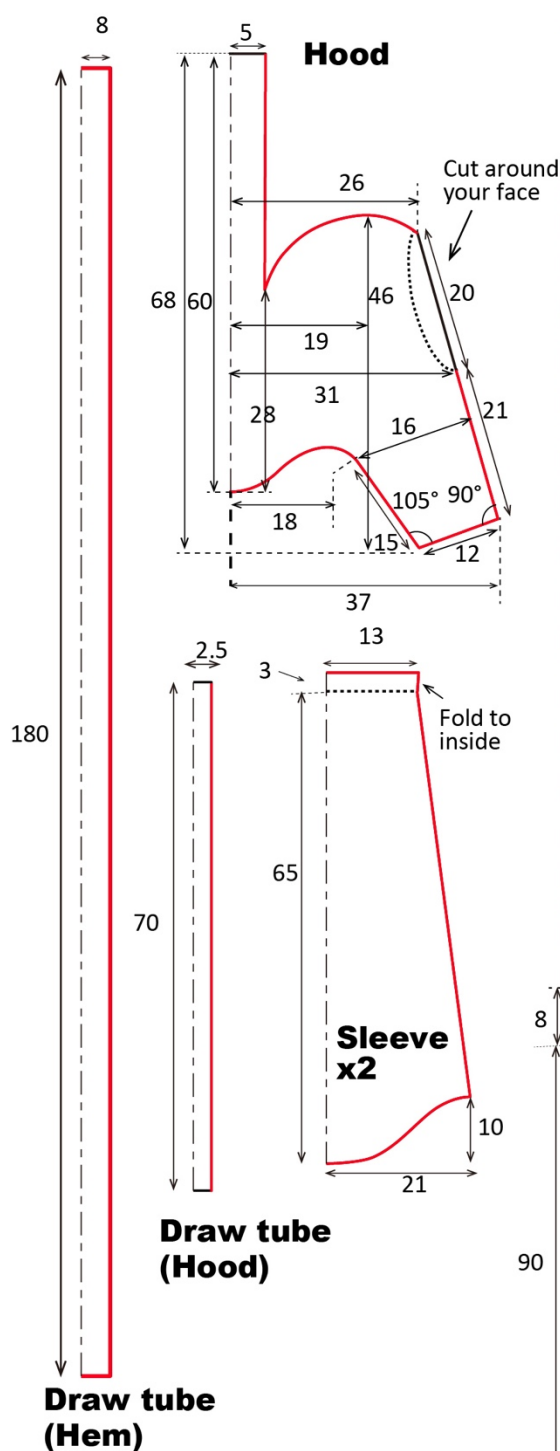
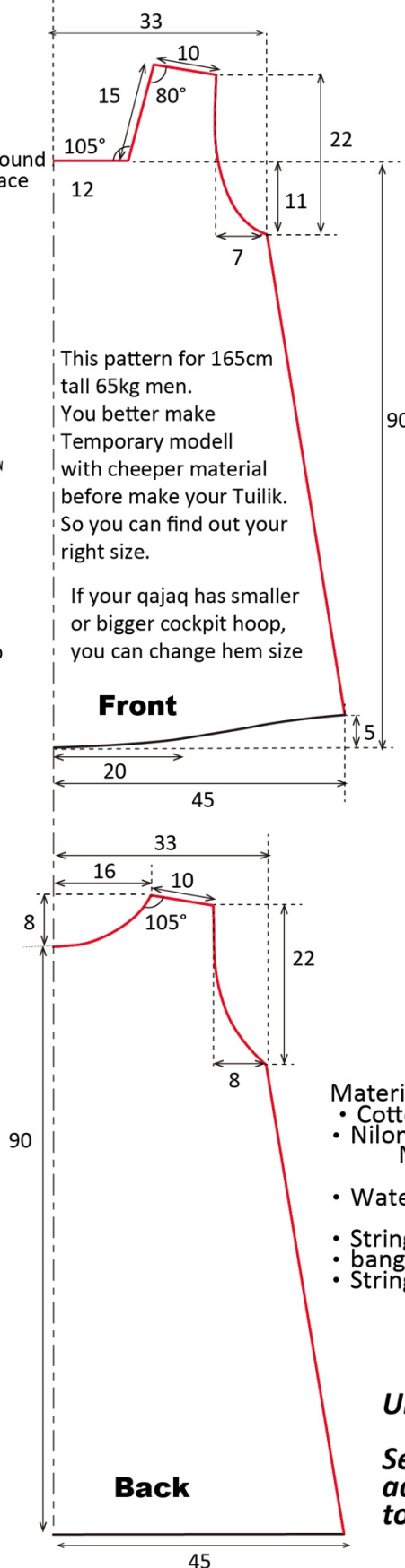


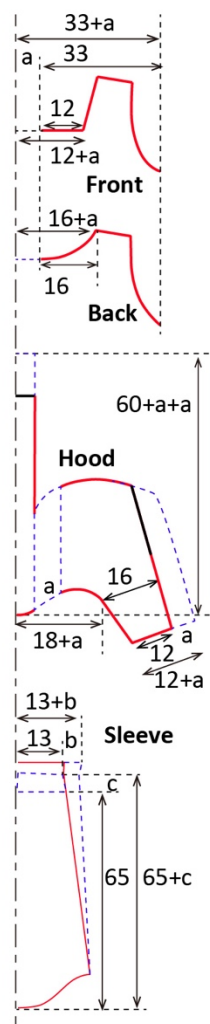
Tuilik Pattern and sewing hint



Tuilik for
165cm tall
65kg



How to fix size

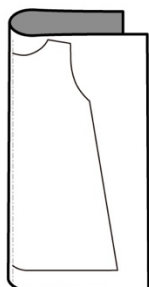


- Material**
- Cotton canvas(not too thick)
 - Nilon
 - Need waterproof coating (Corking, wax etc...)
 - Waterproof coated nylon
 - String for hood
 - bangle or string for hem
 - String or bangle or belt for wrist

Unit : cm

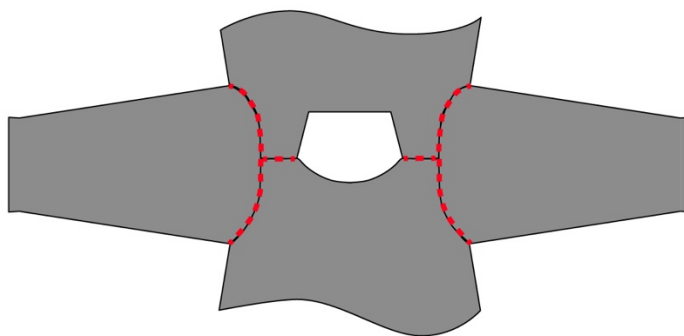
Seam not include,
add 1cm seam
to red line.

1. Cut

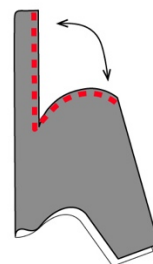


Fold the material.
Cut with 1cm seam.

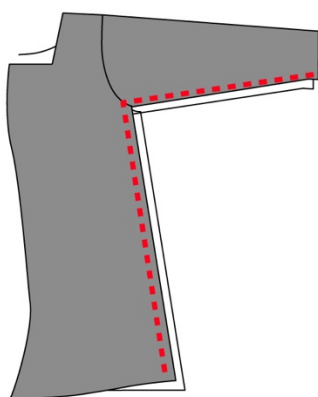
2. Sew bodys and sleeves (from inside)



3. Sew a Hood

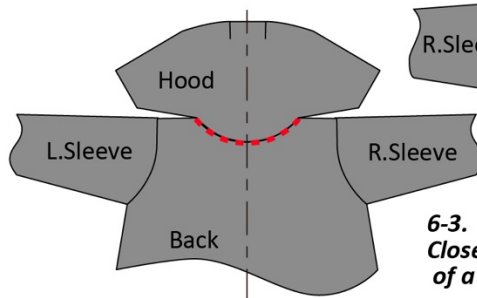


4. Sew body side to sleeve

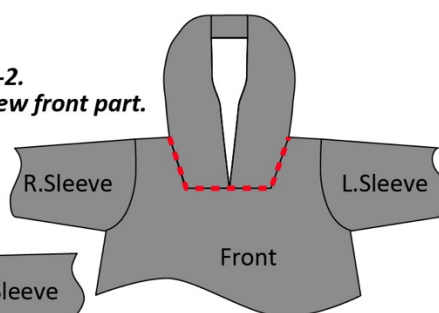


6. Attach a hood

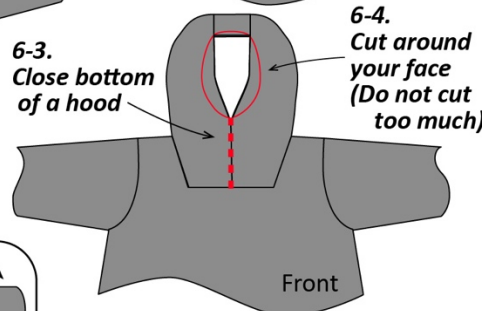
6-1.
Start from the back.
Make sure center line.



6-2.
Sew front part.

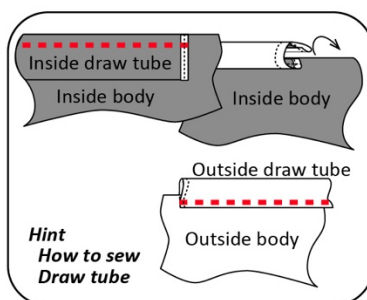
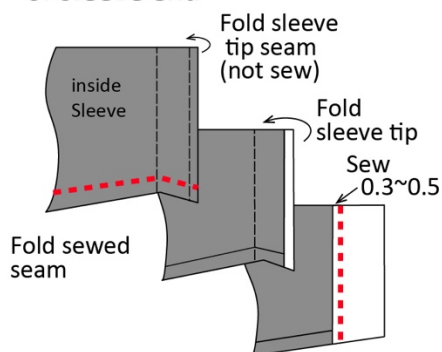


6-3.
Close bottom
of a hood

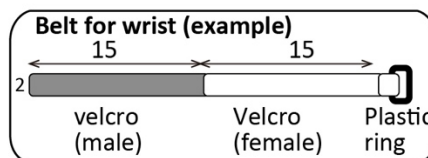


6-4.
Cut around
your face
(Do not cut
too much)

5. Sleeve end

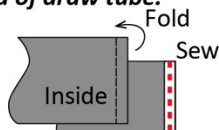


Hint
How to sew
Draw tube

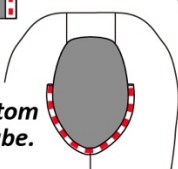


7. Hood draw tube

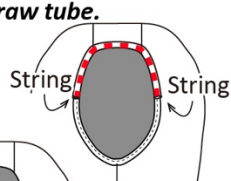
7-1.
End of draw tube.



7-2.
Put bottom
draw tube.

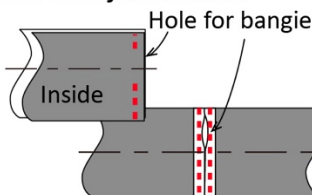


7-3.
Put top
draw tube.

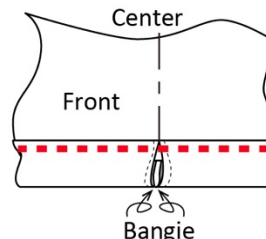


8. Hem draw tube

8-1.
Sew end of draw tube.



8-2.
Put draw tube to hem.



----- Sewing line

※Body and hood part must sew from inside